



TEXMACO RAIL & ENGINEERING LIMITED

An Industry for Industries

Largest single location wagon manufacturing unit in the world



Serving the Nation since 1939

Adventz Group: The Power of Transformation



Saroj Kumar Poddar
Group Chairman

“Agriculture, Engineering, Infrastructure & Services are the key drivers of our economy. Adventz Group, having total turnover of USD 3 billion, is here to give India a never-before advantage & its future, a never-before assurance”

Agri-Business



- Zuari Agro Chemicals
- Paradeep Phosphates
- Zuari Rotem Specialty Fertilizers
- Zuari Seeds
- Zuari Fertilizers & Chemicals
- Gobind Sugar Mills

Engg. & Infrastructure



- Texmaco Rail & Engineering
- Texmaco Infrastructure & Holdings
- Kalindee Rail Nirman
- Bright Power Projects
- Texmaco Hi-Tech Pvt. Ltd.
- Simon India
- Zuari Indian Oil tanking
- Texmaco Defence Systems Pvt. Ltd.

Emerging Lifestyles



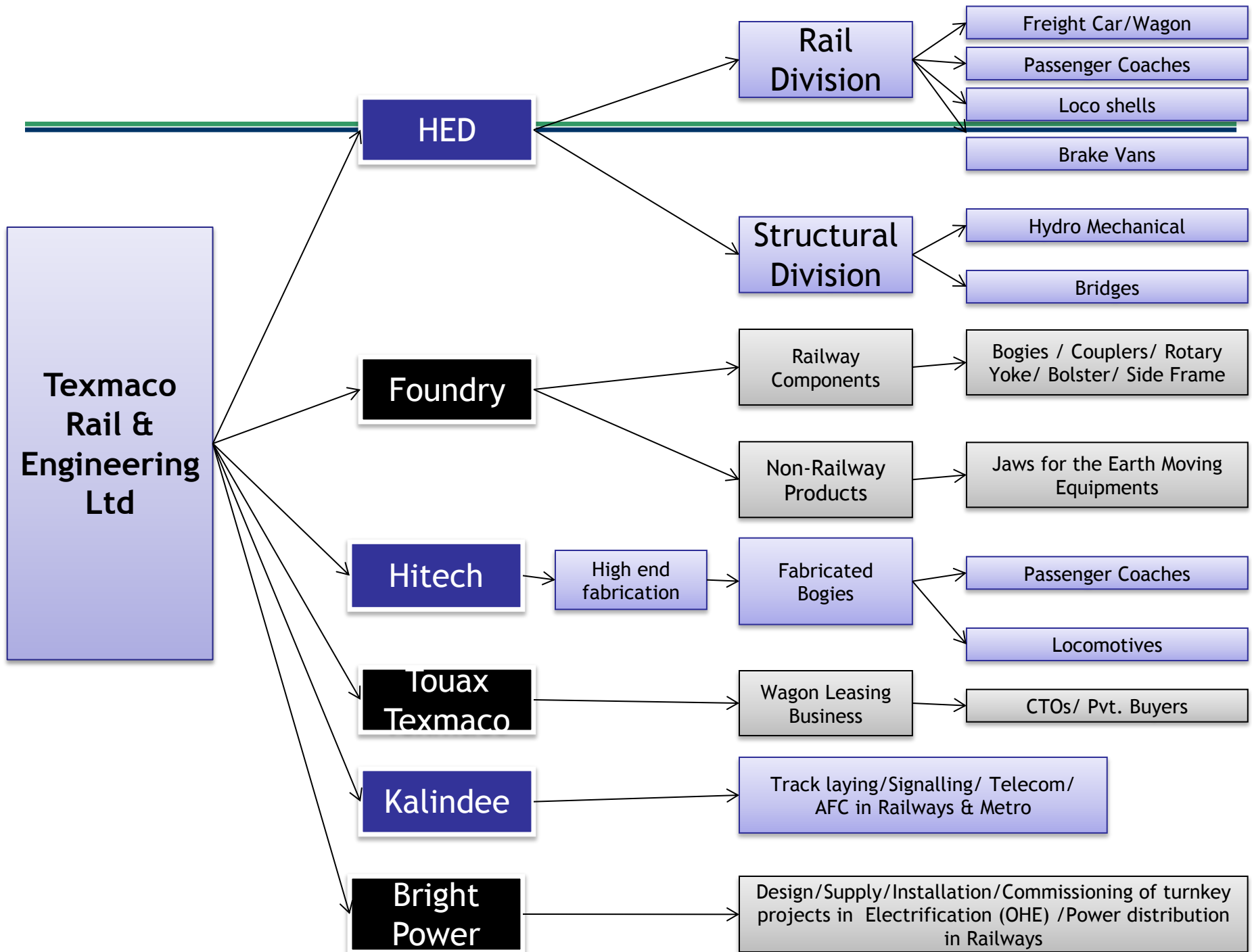
- Zuari Infracore India
- Indian Furniture Products
- Hettich India
- Style Spa Furniture

Services



- Zuari Global
- Zuari Investments
- Zuari Insurance Brokers
- Globex
- Zuari Management Services
- Adventz Investments & Holding
- Lionel India
- Touax Texmaco Railcar

Adventz has strong presence across diverse sectors with capability to transform India



TexRail: Key Business Segments



Freight Car Division

- Conventional Wagons
- Commodity specific Wagons
- Export Wagons
- High Payload Wagons

Largest Wagon manufacturer in India
Largest Steel Foundry in India
Largest exporter of Steel Castings/Wagons



Coach Division

- EMU / Coaches
- Loco Shell
- Loco Components
- Fabricated Bogies



Steel Foundry

- Bogies for IR/Non-IR and Export
- Couplers & Draft Gears
- CMS Crossing
- Castings for mining equipments



Hydro-Mechanical Equipment, Structural & Bridges

- Gates & Penstock
- Hoists
- Gantry Crane
- Heavy Steel Structures
- Bridges



Process & Agro Equipment

- Boilers & Pressure Vessels
- Sugar Mill Machinery
- Storage Equipment
- Power Tillers & Power Reapers



TexRail: Infrastructure

Constructed area : 2.2 Mn. sq ft.

Open area : 4 Mn. sq ft.



All Factories are within a radius of 5 km



4,00,000+ sq ft of manufacturing capacity

Steel Casting Foundry

Social Infrastructure

15 Railway lines inside plant (capacity 6 Rakes at a Time)

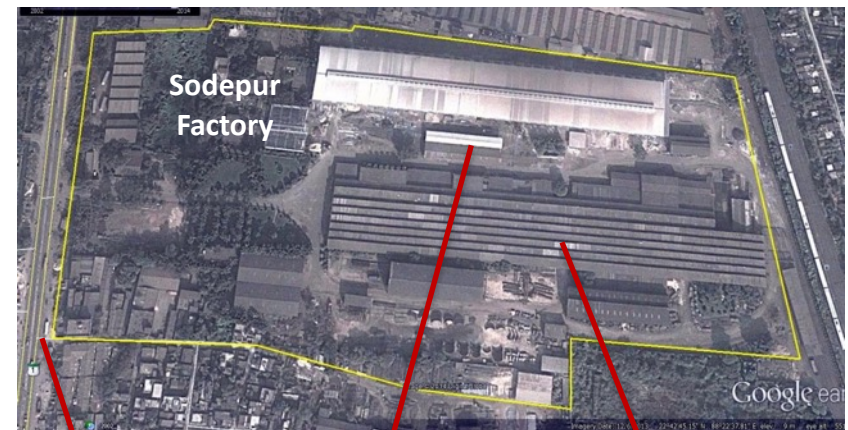
10 km+ of Railway Tracks within premises



Access to State Highway

Facility for loco sub-assemblies

Heavy Engg. plant



Access to State Highway

World class EMU / coach facility

Heavy Engg. plant

Source: Google earth

TexRail: Steel Foundry Division



- **Largest in India** : Annual capacity 30,000 tonnes.
- **2 Fully automatic, PLC controlled Moulding** lines and sand systems (High precision and reproducibility)
- **Exports to niche markets** - Australia, Scandinavian countries , USA, etc.
- ISO 9001 certified & accredited as '**Class A**' Foundry by Indian Railways
- Only Indian Foundry accredited by **Association of American Railroads & CIS Countries**



Side Frames & Bosters



Tight Lock Coupler
for coaches



TEXMACO RAIL & ENGINEERING LIMITED
Steel Foundry Division HPML - II

TexRail: Bridges

- The major projects of Bridge & Structural Division started from September, 2014
- During September, 2014 to July 2016, the bridge division could achieve a turnover of Rs.100 crores.
- The current orders on hand are as under:

Sl. No.	Bridge name	Quantity of Steel (MT)	Contract Value (Rs)
1	TITAS RAILWAY BRIDGE (BANGLADESH)	1096	8.83 Cr.
2	BHAIRAB RAILWAY BRIDGE (BANGLADESH)	6795	79.44 Cr.
3	SRI LANKAN RAILWAY	750	6.82 Cr.
	Total	8641	95.09 Cr.



TexRail: Hydro-Mechanical Equipment/ Steel Structures

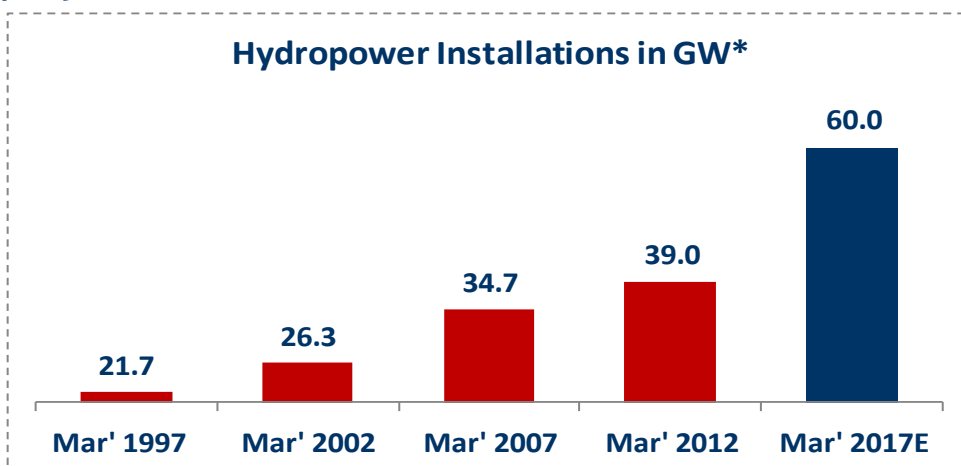


- Pioneer in manufacture of hydro-mechanical equipments and penstock Liners / Specials
- Only Company qualified in India for international bids
- Superior logistics - Proximity to North-Eastern belt having huge market potential
- Supplied the largest radial gate made in India and 2nd largest in the world for the Chamera Stage - II Hydel project of NHPC at Himachal Pradesh

Projects Executed/ Under Execution

India	Capacity (MW)
Dewang, Arunachal	3,000
Subansiri, Arunanchal	2,000
Tehri Pass, Uttarakhand	1,000
Parbati, H.P.	800
Pakaldul, J & K	700
Teesta V, Sikkim	510
Vishnugarh, Pipalkoti	444
Purulia, West Bengal	400

Overseas	Capacity (MW)
Sankosh, Bhutan	4,060
Manas, Bhutan	2,800
Tuanku Ja' far, Malaysia	1,500
Tala, Bhutan	1,020
Tamakoshi, Nepal	456



*Based on Central Election Authority (CEA) report





Track Linking

Largest Private Sector Player in ballast less track

- Gauge Conversion
- New Line & Siding Line
- Installations of Points & Crossings
- Yard Remodeling and Ballast Less Track

Civil & Structure

- Major Bridges
- Minor Bridges/Culverts
- Station Buildings
- Embankment & Earthwork



Signaling

Largest Private Sector turnkey player with capability to integrate products from multiple sources.

- Conventional/Color Light/Yard/Multi Aspect signaling
- Level Crossing Interlocking.
- Axle Counters/Audio Frequency Track Circuit

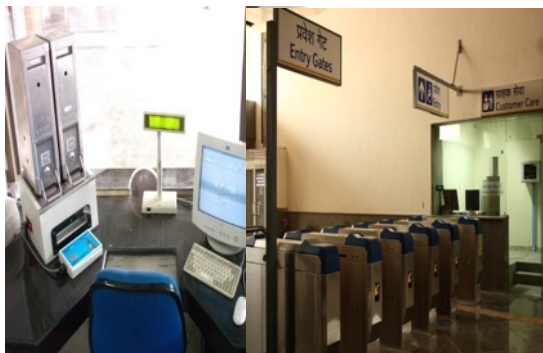


Telecommunication

- Underground copper cable
- Underground OFC System
- Wireless Networks (GSM)
- Microwave/UHF Radio Towers
- Cab Radio

Automatic Fare Collection

- Installation of Gates
- Operational Control Centre
- Software Development Centre
- Ticket Office Machine/ Ticket Readers



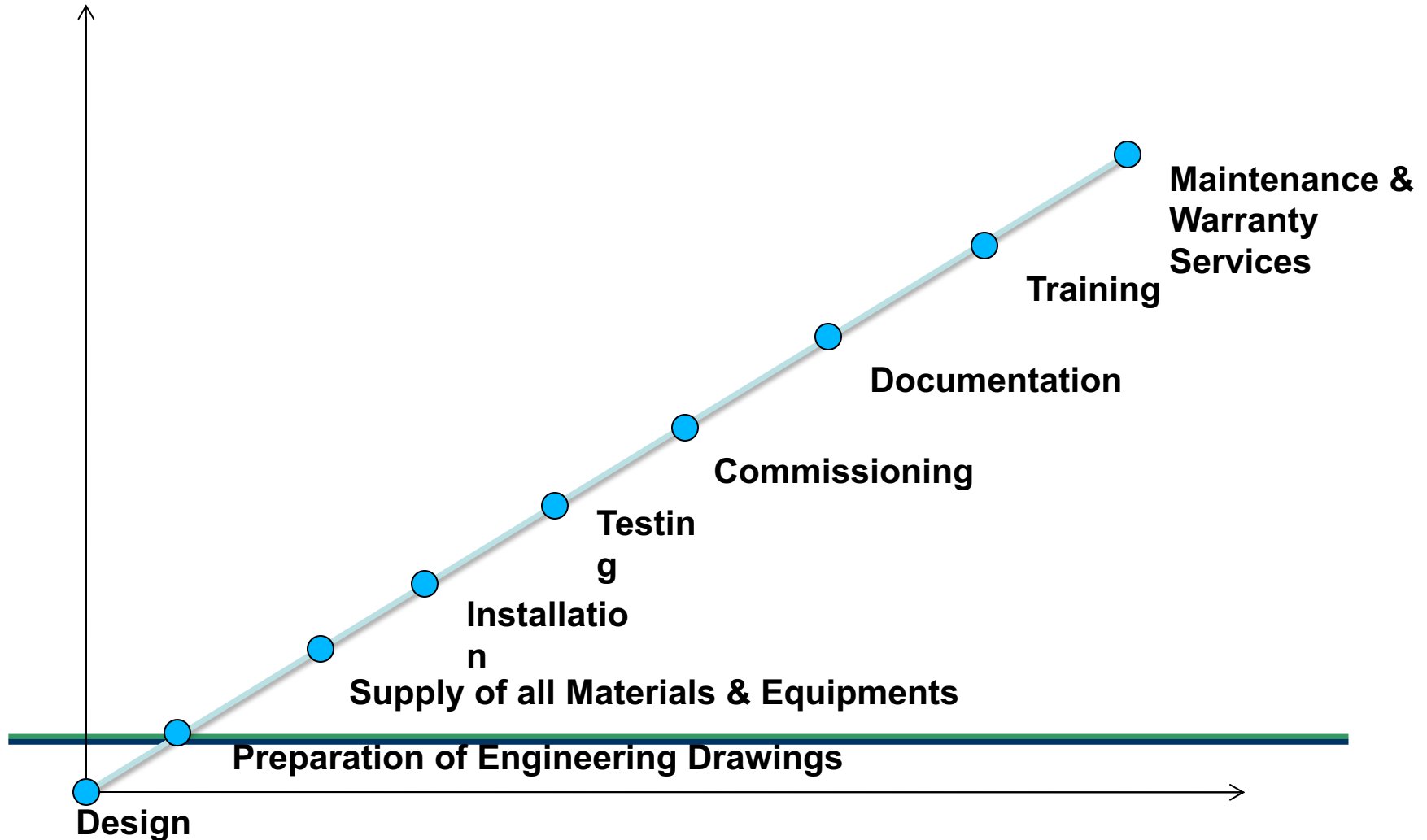


Underground tunnel work – Delhi Metro

Pioneers in

- Signaling work contracts in India
- Installing Longest Optical Fibre Network of 1,000 Kms
- Highest Speed of Track Construction (2Km per day)
- Highest Test Speed of track (130 Kmph on the very first trial)
- Executing largest signaling contract of 54 Stations
- Installing Contactless Automatic Fare Collection System for Delhi Metro
- Installing Ballastless Track for Underground Section of Delhi Metro
- Executing Turnkey Rail Facility Work for private sidings

TURNKEY SOLUTION PROVIDER



OUR - EXPERTISE

	Railway	Metro	Private Siding
BALLASTED TRACK	✓	✓	✓
BALLASTLESS TRACK	x	✓	✓
SIGNALLING	✓	x	✓
TELECOM	✓	x	✓
AUTOMATIC FARE COLLECTION SYSTEM	x	✓	x

Note: -Civil work related to track work like Earthwork, Bridge work, Buildings etc is also executed by us.

TRACK EXPERIENCE

Gauge Conversion

1571 Kms

New Line & Siding Line

852 Kms

Installations of Points & Crossings

1519 Nos

Yard Remodeling

125 Kms

Ballast Less Track

380 Kms

CIVIL EXPERIENCE

Major Bridges

45 Nos

Minor Bridges/Culverts

470 Nos

Building

30 Nos

Earthwork

25 Million Cum

SIGNALLING EXPERIENCE

Conventional Signalling

290 Stations

Panel Interlocking

362 Stations

Color Light Signalling

390 Stations

Level Crossing Interlocking

266 Nos

Axle Counters

265 Nos

Audio Frequency Track Circuits

115 Nos

SIGNALLING EXPERIENCE CONT..

Token Less Block Systems

215 Stations

Multi Aspect Signalling

69 Stations

Solid State Interlocking

106 Stations

Signaling for 25 KV AC Traction

59 Stations

Major Yard Signalling

38 Nos

Route Relay Interlocking

40 Stations

Electronic Interlocking

69 Stations

TELECOMMUNICATON EXPERIENCE

Under Ground Copper Cables	8490 Kms
Under Ground OFC Systems	3084 Kms
Over Head Lines	400 Kms
Mobile Train Radio	220 Cabs
OFC Equipment Installation	112 Stations
Wireless Network (GSM)	60 Kms
Microwave / UHF Radio Towers	32 Nos
MSO & EBTS	4 Nos

RAILWAY AUTOMATION EXPERIENCE

Automatic Fare Collection Gates

1382 Gates

Ticket Office Machines

644 Nos

Electrical Distribution Cabinets

720 Nos

Ticket Readers / AVM

368 Nos

OCC / SDC

7 Nos

Networking Equipments

478 Nos

Ticket Vending Machine

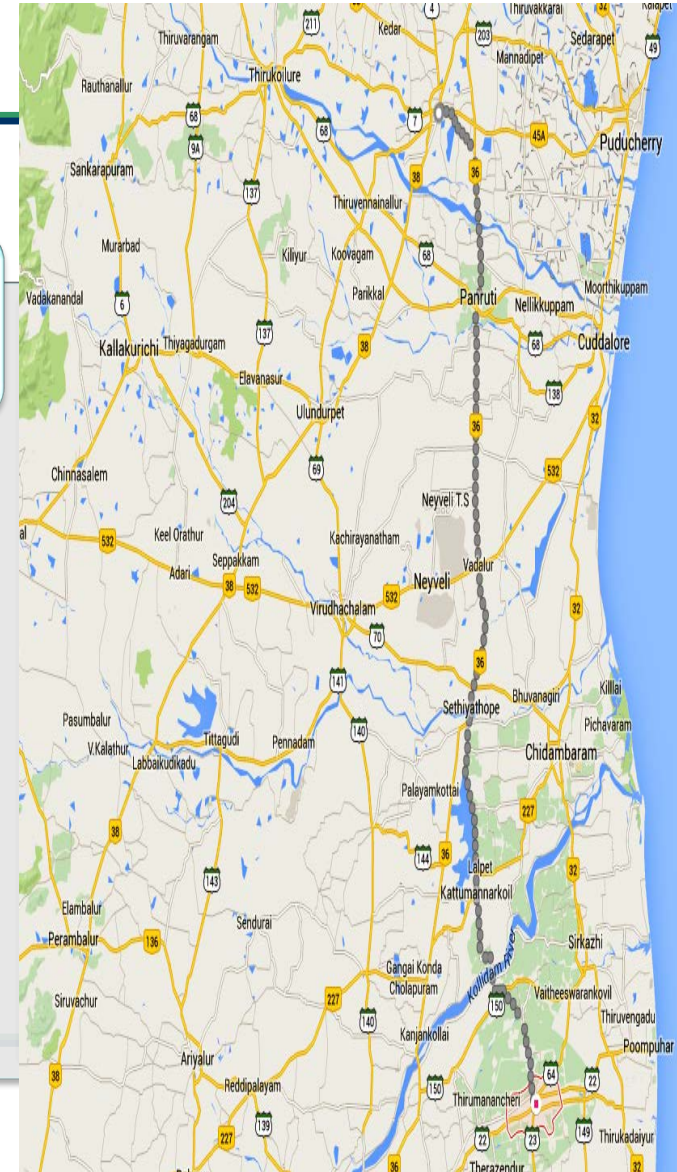
178 Nos

MAJOR TURNKEY PROJECTS COMPLETED



Southern Railway (Villupuram - Mayiladuturai)

- Project Value: 128 Million USD
- Work Value : 53.59 Million USD
- Track Linking : 122 Route Kms.
- Total Signalling Stations: 16 Nos (Electronic Interlocking)
- Highest Quality standards maintained.
- On Time Completion.
- Work won all round appreciation.

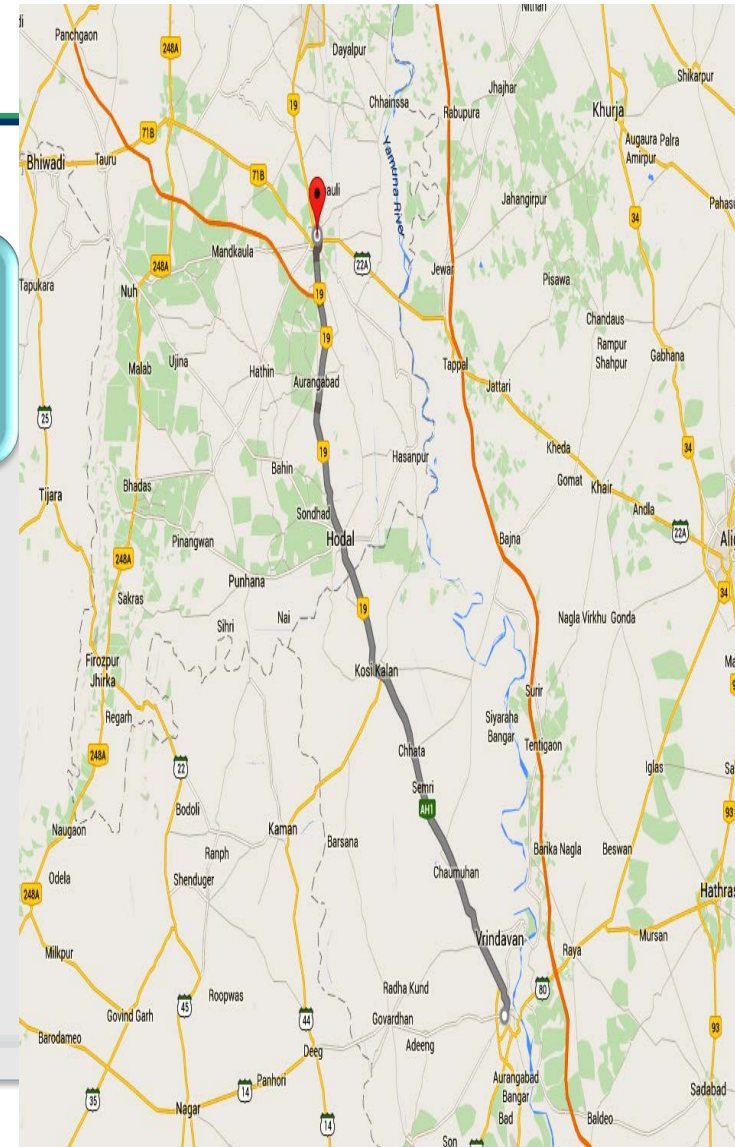


MAJOR TURNKEY PROJECTS COMPLETED



North Central Railway (Palwal- Bhuteshwar)

- Project Value: 148 Million USD
- Work Value : 46.05 Million USD
- Track Linking : 92 Route Kms.
- Total Signalling Stations: 8 Nos (Electronic Interlocking)
- **Highest Train Speed Achieved: 160 Kmph**
- Work won all round appreciation.

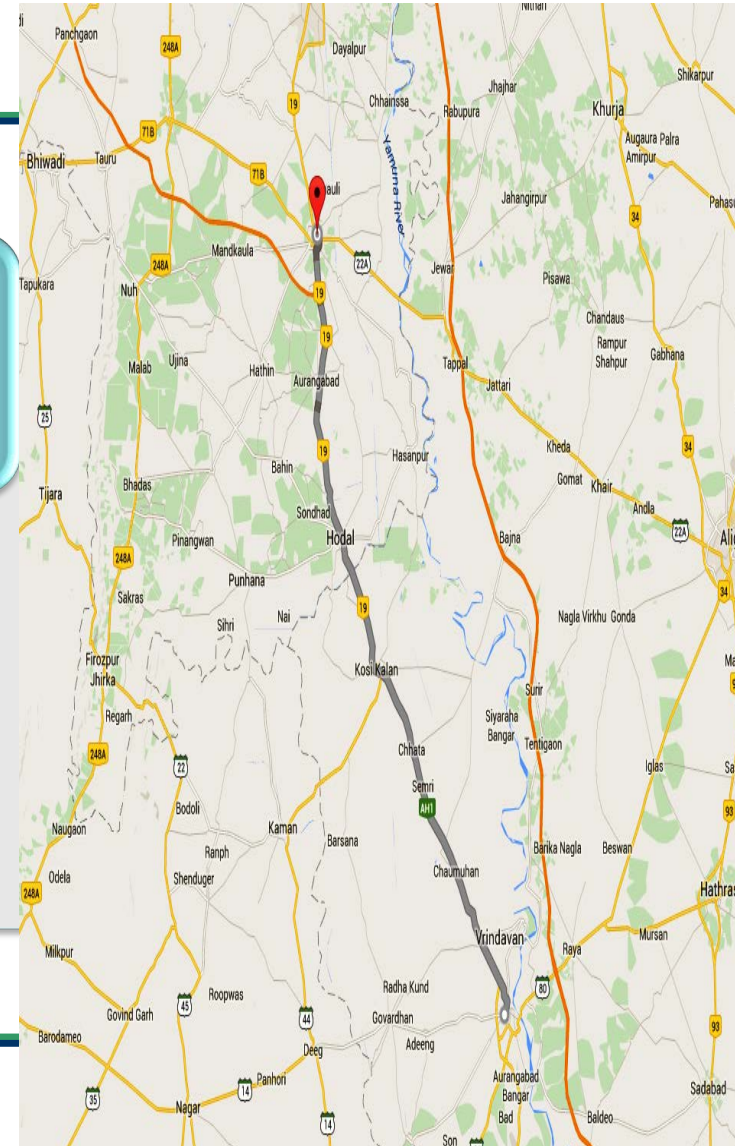


MAJOR TURNKEY PROJECTS COMPLETED



Northern Railway (Rohilla - Rewari)

- **Project Value: 107 Million USD**
- **Work Value : 11.17 Million USD**
- **Track Linking : 79 Route Kms.**
- **Work won all round appreciation.**



MAJOR TURNKEY PROJECTS COMPLETED

Talwandi Sabo Power Ltd. (Mansa)

- **Project Value: 197 Million USD**
- **Work Value : 74.18 Million USD**
- **Track Linking : 67 Route Kms.**
- **Work won all round appreciation.**

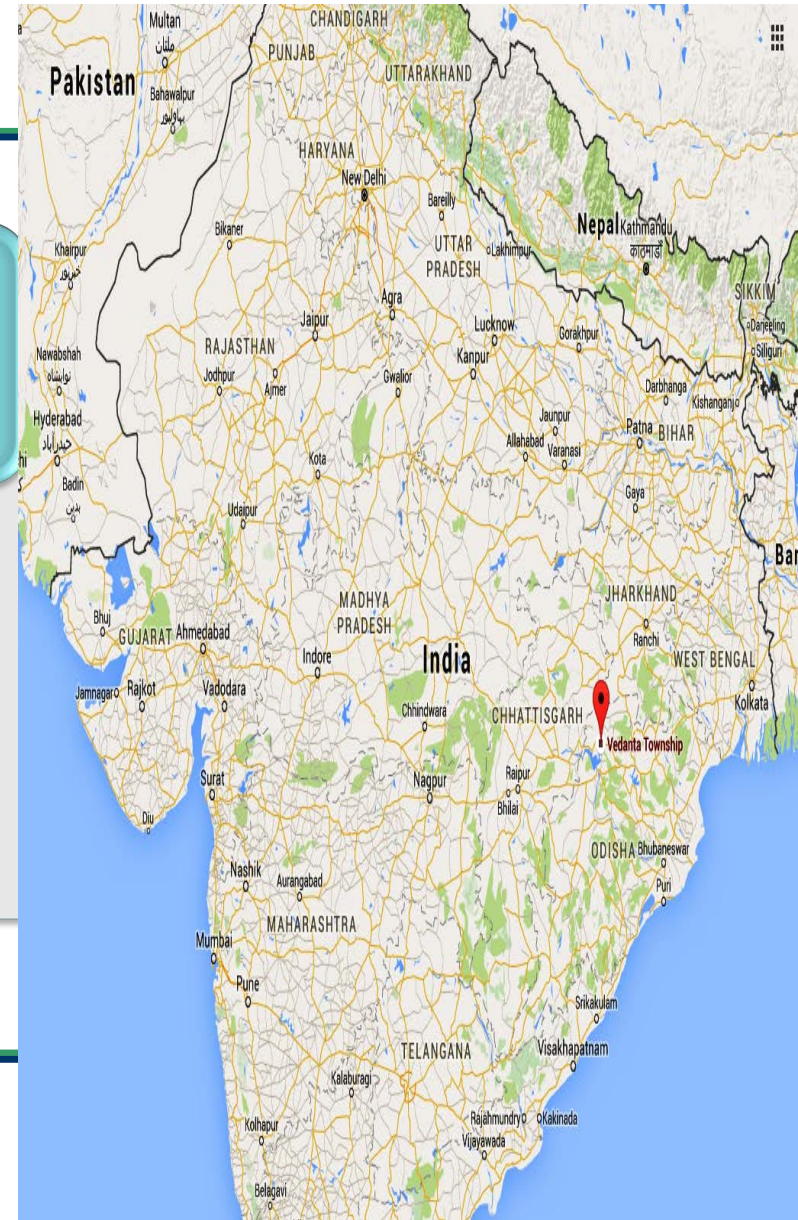


MAJOR TURNKEY PROJECTS COMPLETED



Vedanta Aluminium (Jharsuguda)

- **Project Value: 89 Million USD**
- **Work Value : 13.80 Million USD**
- **Track Linking : 19 Route Kms.**
- **Work won all round appreciation.**



MAJOR TURNKEY PROJECTS IN HAND



डेडीकेटेड फ्रेट करिडोर
DEDICATED FREIGHT CORRIDOR
(WESTERN)

Dedicated Freight Corridor (Rewari - Vadodra)

- Total Project Value: 5384 Million USD
- Value of S&T Work : 294.39 Million USD
- Total Route Length: 970 Kms
- Complete Design Build Lump Sum Contract for Signalling & Telecommunication.

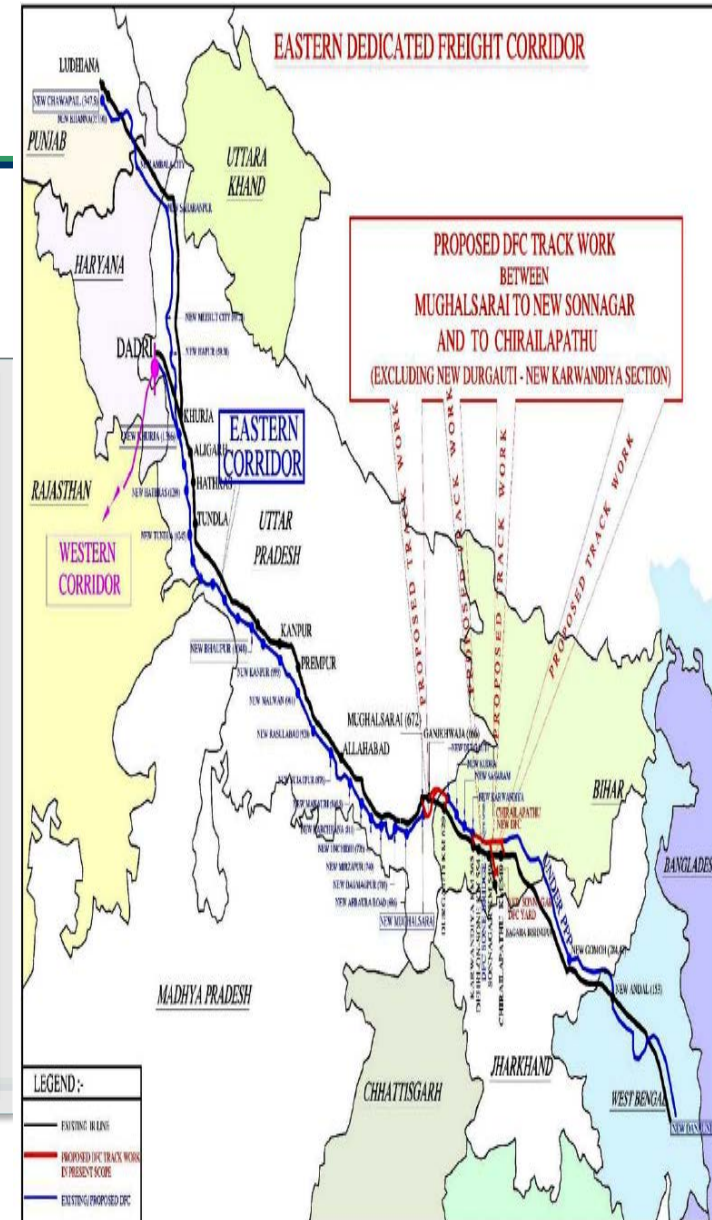


MAJOR TURNKEY PROJECTS IN HAND



Dedicated Freight Corridor (MughalSarai to New Sonnagar & Chirailapathu)

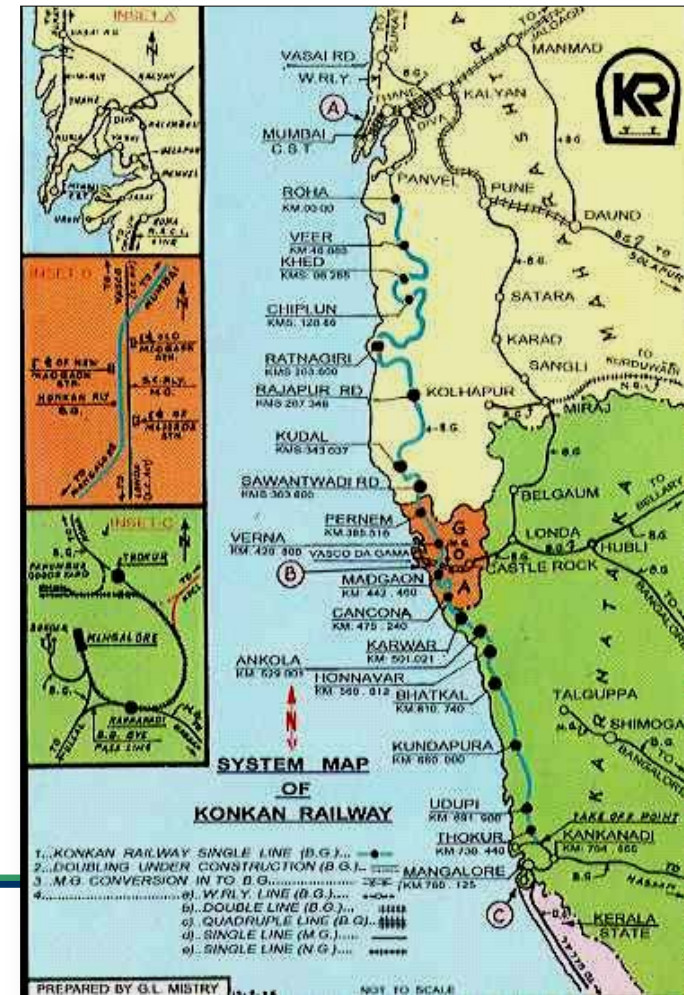
- Total Project Value: 384 Million USD
- Value of Track Work : 28.80 Million USD
- Total Track Length: 144 Kms
- Complete Design Build Lump Sum Contract for Trackwork.



MAJOR TURNKEY PROJECTS COMPLETED

Konkan Railway

- Biggest Signalling Project Undertaken (54 Stations Panel Interlocking)
- Biggest Telecom Project (OFC System 1000 Km)
- B.G.Track in Deep Cuttings 60 Kms.
- Highest Quality standards maintained.
- On Time Completion.
- Work won all round appreciation.

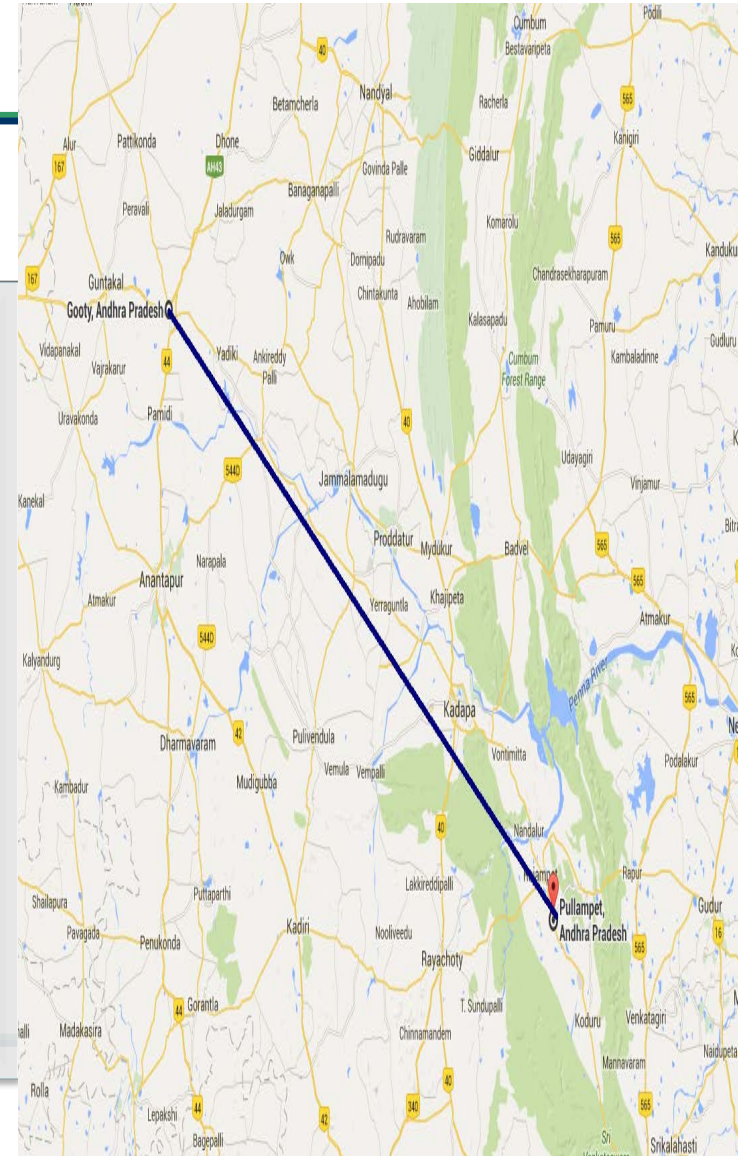


MAJOR TURNKEY PROJECTS COMPLETED



South Central Railway (Gooty - Pullampet)

- **Total Signalling Stations: 23 Nos (Electronic Interlocking)**
- **Value of work : 23 million USD**
- **Length of section: 151.05 Route Kms.**
- **Highest Quality standards maintained.**
- **On Time Completion.**
- **Work won all round appreciation.**



MAJOR INTERNATIONAL TURNKEY PROJECTS COMPLETED



COMPLETE TRACK RENEWAL OF RAILWAY LINE ON TURN KEY BASIS. THE WORK INCLUDE THE LAYING AND LINKING OF TRACK, REPLACEMENT OF POINTS AND CROSSINGS, SUPPLY OF BALLAST, CONSTRUCTION OF STATION BUILDING, PLATFORM ETC. ON TURNKEY BASIS IN JAIDVEPUR - EAST ZONE OF BANGLADESH RAILWAYS

TOTAL CONTRACT VALUE: US \$ 22.5 MILLION

REHABILITATION OF EMBANKMENT, BRIDGES, STATION BUILDINGS, PLATFORMS AND SHEDS, LEVEL CROSSINGS AND RAILWAY TRACK ALONG WITH ALL ASSOCIATED WORK ON KULaura SHAHBAZPUR SECTION INCLUDING SUPPLY OF LABOUR, MATERIAL, EQUIPMENT, ETC ON TURNKEY BASIS FOR BANGLADESH RAILWAYS

TOTAL CONTRACT VALUE: US \$ 67.68 MILLION



BUSINESS SEGMENTS



DC Traction

- Over Head Electrification (OHE)
- Sub Station

AC Traction

- Over Head Electrification (OHE)
- Sub Station

Ancillary Works

- Cable Network
- Incoming Power Supply Arrangement



Bright Power Projects -

Key Strengths

Expertise in Electrification

- BPPL offers the widest range of services within electrification
- Served as an advisor to the Indian Railways on major electrification projects from the planning stage, right up to execution
- Other projects include electrification of residential colonies, industrial plants, complexes, installation of underground and supply, erection, testing & commissioning of electrical substations

Corporate Base

- BPPL's clients include Indian Railway and well know corporate such as Adani Power, Mangalam Cement Ltd., Mangalore Refinery & Petrochemicals, Oberoi Hotels and BARC among others
- The company is also associated with major consulting firms such as Toyo, Mitsubishi, Engineers India, Uhde India

USP

- One of the few Indian companies that can undertake overhead electrification and power supply installations for both DC and AC traction systems
- Presences of an in-house design team that caters to the requirements of new and existing projects



**Bright Power
Projects
(India) Pvt.
Ltd.**

Team

- Senior management with close to 20-25 years of individual expertise in designing, planning and execution of turnkey projects
- The existing team is trained to provide turnkey services to the railways on traction, signalling & civil work projects

Joint Ventures / Bids

- JVs formed with JMC Projects, IL&FS Engineering, Instalaciones Inabensa SA and Tantia Constructions
- Joint bids made with large EPC players such as GMR, Toyo Engineering, BGR Energy Systems & ISC Projects among others

Bright Power Projects (India) Pvt. Ltd. (BPPL) - Key Positioning Themes

Bright Power Projects
"From Concept To Commissioning"

1

Strong Proven Track Record Railway Electrification

- Offers the widest range of services within electrification
- Worked closely and been associated with Indian railway for more than 25 years
- Also engaged in electrification of residential colonies, industrial plants, complexes, installation of underground cables etc

2

Dedicated In-house Design Teams Across Locations

- One of the few Indian companies that can undertake overhead electrification and power supply installations for both DC and AC traction systems
- Dedicated in-house design team that caters to the requirements of new and existing projects

3

Strong Order Book From Reputed Clients

- Clients include Indian Railways and well known corporate such as Adani Power, Oberoi Hotels, Mangalore Refinery & Petrochemicals and others
- Also associated with major consulting firms such as Toyo, Mitsubishi, Engineers India, Uhde India

4

Experienced Promoters & Management Team

- Senior Management team consists of 25-45 years of individual expertise in and designing, planning and execution of turnkey projects
- Existing team is trained to provide turnkey services to the railway on traction, signalling & civil work projects

5

Successfully Executed Large Projects Through JVs

- JVs formed with JMC Projects, IL&FS Engineering's, Instalaciones Inabensa SA and Tantia Constructions
- Successfully bided with large EPC players such as Toyo Engineering, BGR Energy Systems & ISC Projects, among others

Strong Proven Track Record Railway Electrification

1

S. No.	Projects	Client	Contract size (INR Mn)	Year of completion	Highlights
1	Conversion of OHE from Virar to Churchgate of Western Railway	Western Railway, Churchgate	250	2012	Conversion of Entire Western Railway Suburban Section was carried out by us
2	Electrification of Railway Lines from Mankurd to Vashi, Vashi – Belapur, Belapur-Panvel, Panvel-Karjat, Karjat-Khopoli and from Thane-Turbhe-Vashi-Nerul	MTP Railways/Central Railway, CSTM	700	2011	Executed entire Additional Extension of Harbour Line and Thane New Mumbai
3	Electrification of 4 th & 6 th Lines from Kurla-Bhandup including modification in Vidya Vihar Yard	MTP Railways/Central Railway, CSTM	150	2012	Executed highly complicated work of Vidyavihar
4	Design, manufacture, supply, erection, testing & commissioning of 110kV/27kV and allied services at Thakurli TSS in Thane-Kalyan section of Central Railway	MTP Railways/Central Railway, CSTM	120	2012	Biggest Traction Sub-station of Indian Railways
5	Additional 7 th Line between Sandursht Road to Masjid Bunder	MTP Railways/Central Railway, CSTM	60	2011	Additional Line laid by shifting existing six lanes
6	Electrification of Lines between Talvadia –Khirkhiya of Central Railway	Central Railway, CSTM	60	2011	Work carried out in record time
7	Quadrupulating of Lines from Borivali to Vasai of Western Railway	Western Railway, Churchgate	120	2010	Work carried out in record time
8	Track and OHE works for Construction of EMU maintenance of Carshed between Nallasopara & Virar Stations of Western Railway	M.R.V.C	200	2013	Biggest Car Shed of Indian Railways
9	Design, Supply, Erection, Testing and Commissioning of 25KV, AC 50 Hz, Single phase OHE between Akodia-Shujalpur, Kalapipal-Parbati, Parbati-Baktal station on Ratlam Division of Western Railway.	Western Railway	184	2012	Work carried out in record time
10	Design, Supply, Erection, Testing & Commissioning of 25KV, AC, Single Phase, 50 Hz, Traction Overhead Equipments and other allied service at Kangeri (Excl) – Mysore (Incl) of South Western Railway under RE Project Secunderabad, Total 125 RKM / 302 TKM.	Railway Electrification, Secunderabad	121	2013	Work of 300 TKM
11	Provision of 25KV AC OHE, AT and Interrupter at Dahanu Road and VR-DRD Section in connection with running of EMU Services between VR-DRD Section of Western Railway	MRVC	41	2011	Facilitated Suburban Traffic to Dahanu beyond Virar
12	Electrification of Bangalore Mysore railway	CORE, Allahabad	120	2014	Executed electrification line for 150 km
13	Supply, Laying, Testing and Commissioning of 66KV(E) Grade, Single Core, 400 sq.mm copper conductor, XLPE insulated feeder cables from to OHE Bandra TSS, Mahim SSP, Elphinstone Road SP, Mahalaxmi TSS & Mumbai Central SSP on Vile Parle – Churchgate Section of Suburban of Western Railway	MRVC	98	2012	First 66 KV Cable System of Railways

Pre-qualified for electrical works upto 400 tkm for railways and 250 tkm works for SPVs

KEY PARTNERS:



KEY CLIENTS:



Texmaco Rail + Kalindee Rail + Bright Power: Total Solutions player in Rail Segment



**Planning/Designing
New Lines**

✓ KALINDEE



**Embankment &
Earth-work**

✓ KALINDEE



Bridges and Structures

Structures

✓ TEXMACO

Construction

✗ CIVIL WORK



Rail Signaling

✓ KALINDEE



Electrification

✓ BRIGHT POWER



**Track Linking –
Lines & Switches**

✓ KALINDEE



**Track Materials-
Crossings**

✓ TEXMACO



Locomotive Bogies/ Underframe

EMU Coaches

✓ TEXMACO

Wagons

✓ TEXMACO

Bogies

✓ TEXMACO



**Passenger
Automation**

✓ KALINDEE



**Telecommunication
& Safety Systems**

✓ KALINDEE

Combined entity will be India's 1st truly diversified Rail company

Thank You